



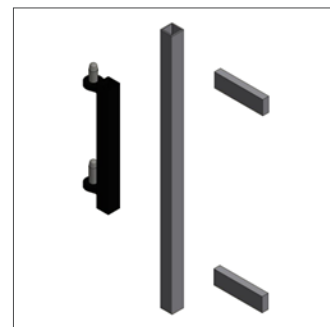
# VELA Person Lift: Instruction for adapting the mounting kit for cars

VELA Person Lift is based on a well-known and proven design that has been used worldwide for more than 40 years. The Person Lift is especially suitable as a portable lift in passenger cars, which are not very spacious. Since almost all cars are different, the separate mounting kit for cars which accompany the Person Lift must be adapted by an authorized dealer to fit the specific car and made according to the following instructions.

## MATERIALS

The adaptation is based on the mounting kit for VELA Person Lift.

**Item number: M123102** Complete mounting kit for car, VELA Person Lift



Item number: M123102

VELA Person Lift is mounted as illustrated in the image:



The mounting kit must be made entirely of weldable structural steel. The dealer is allowed to weld additional brackets on the side and on the back of the mounting kit to customize the interfaces to the car. All components welded to the mounted kit must also be weldable steel.

## SURFACE TREATMENT

The mounting kit has surface treatment for rust protection. Before welding, remove the surface treatment in the area near the weld. After adapting the kit, the bracket should have a new surface treatment to increase durability and ensure rust protection.

## ADAPTATION

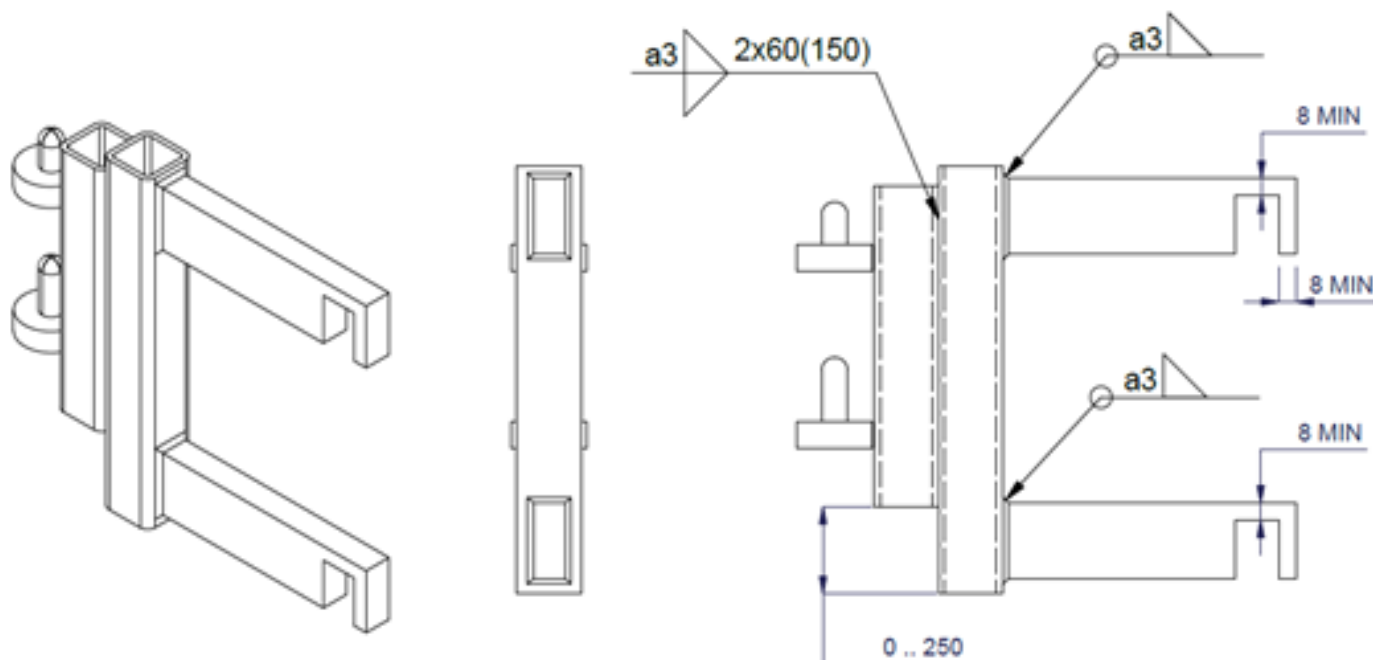
The mounting kit is intended to be mounted on the door hinges of a car. Most cars have two door hinges in each door that are placed vertically above each other. The raw materials included in the mounting kit must be seen as a starting point. The square profile must be adjusted in length to the two door brackets of the car. At each end of the profile, a hook must be constructed that can be mounted on the car's two door hinges. The hook can be constructed of the two loose pieces of flat steel.

**Note:** For optimal use of the lift, the mounting bracket should be angled up to 2 degrees backwards. This ensures that the lift's lifting arm is horizontal under load, making it easier to rotate during use.



# VELA Person Lift: Instruction for adapting the mounting kit for cars

THE HOOKS SHALL BE MANUFACTURED ACCORDING TO THE FOLLOWING MINIMUM MEASUREMENTS:



The design of the hooks should follow the car's door hinges as much as possible to ensure a minimum of slack. However, be aware of leaving enough space for easy installation of the bracket without scratching the door hinges of the car. The hooks should be as wide as the door hinges allow for optimal stability.

## EXAMPLE

See the following example of an adapted mounting kit for a Mercedes E-Class:

