

Living independently at home

# The VELA Chair



# Introduction

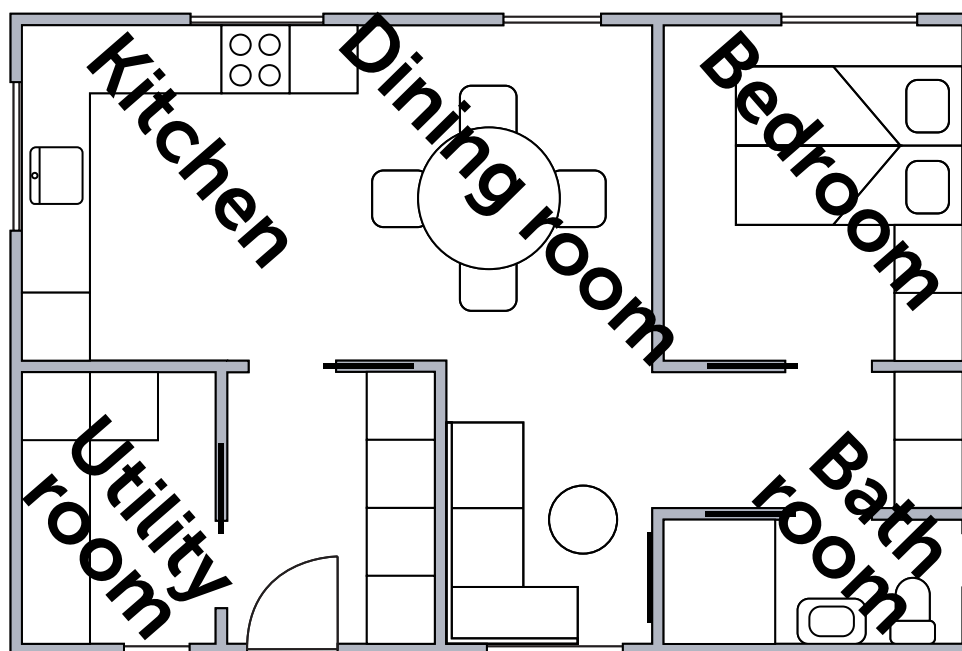
Assistive technologies play a vital role in improving everyday life for people with disabilities. They help promote independence, support activity, and enable meaningful participation at home and beyond.

One such solution is the VELA Chair – a mobility aid originally developed in the 1970s, and still widely used today in private homes and care settings. Its continued popularity is rooted in a simple but powerful feature: the central brake, which ensures safety and stability while allowing users to perform everyday tasks independently.

The VELA Chair combines this safety with mobility. It features smooth-running wheels that allow users to move the chair around while seated – supporting both independence and comfort.

The chair is available with either manual or electric height adjustment. The electric version helps reduce uncomfortable impacts and supports people with limited strength, balance, or energy when moving from sitting to standing.

On the following pages, we explore the key benefits of the VELA Chair for both users and care providers – with a focus on everyday life at home.



## A VELA Chair provides self-reliance & independence in relation to:



Mobilisation and transferring



Increased Reach



Cooking



Refrigerator



Top cabinet



Dishwashing



Laundry



Hanging up laundry



Ironing



Personal hygiene



Using the toilet



Closet



Dressing



Watering plants



Cleaning



Vacuuming

# The VELA Chair



## STABILITY AND MOBILITY

Stay stable during everyday tasks with the central brake – and enjoy the freedom to move around your home thanks to the smooth-running wheels.



## COMFORT AND ERGONOMICS

Adjust the chair to match your body and needs. Designed for long-term use, it offers excellent comfort and ergonomic support.



## REACH AND RISE WITH EASE

The electric lift helps you reach both high and low places without strain – whether you're grabbing something from a cupboard or emptying the dishwasher. It also gives you the extra support you need when standing up.



## SAFETY YOU CAN TRUST

Sit securely every day. The brake, stable armrests and supportive backrest give you the safety and confidence to carry out activities independently.

---

## The VELA Chair with Power Wheels



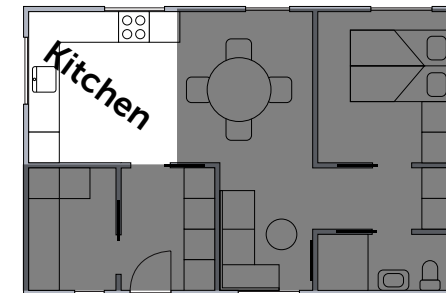
## STAY ACTIVE – ON YOUR OWN TERMS

Use your feet to walk the chair around as long as you feel able. When your energy runs low, Power Wheels give you a helping hand – so you can keep moving without overexerting yourself.



## INTUITIVE CONTROL AT YOUR FINGERTIPS

It is easy to activate and steer the Power Wheels with a simple joystick. Whether mounted on the right or left side, the control is within easy reach and designed for smooth, user-friendly operation.



# Kitchen activities!

For people with disabilities, working in the kitchen can be both exhausting and risky. Poor balance and reduced leg strength make it difficult to stand for long periods, increasing the risk of dizziness, fatigue, and falls – especially when handling knives or hot pots. It can also be challenging to reach into cupboards, load the dishwasher, or move safely around the kitchen.

A VELA Chair helps overcome these challenges. It provides support while seated or standing, and the smooth-running wheels allow you to walk the chair around in a seated position. The central brake offers stability and safety at both low and high seat heights – so you can cook, reach, and move with greater confidence and independence.



Example:

# Cooking

## A VELA CHAIR ENABLES:

- :: Handling kitchen utensils and food with both hands while seated safely with the brake engaged
- :: Cooking at the stove while seated – with adjustable height for a safe working position and a clear view into pots
- :: Moving around the kitchen in a seated position by using your legs to walk or push the chair – even while carrying items like food or dishes
- :: Reaching high cabinets or a microwave from a seated position, thanks to the electric height adjustment



Watch a video by scanning the QR code or visit: [vl1935.dk/cooking](https://vl1935.dk/cooking)

Example:

# Dishwashing

## A VELA CHAIR ENABLES:

- :: Reaching both low and high areas by adjusting the seat height – for example, lowering the chair to empty the dishwasher or raising it to place items in a cabinet
- :: Handling dishes with both hands free – whether you're loading the dishwasher or doing the dishes manually – while seated securely with the brake engaged
- :: Saving energy when you have reduced leg strength or poor balance, as tasks can be done in a seated and stable position



Watch a video by scanning the QR code or visit: [VL1935.dk/dish](https://VL1935.dk/dish)





# It's dinner time!

For most people, mealtimes mean good food and good company. But for others, pain or disability can make it difficult to sit comfortably and participate at the dining table. A VELA Chair helps create the right conditions for a good mealtime. It supports a functional and ergonomic sitting position, which is essential for eating and drinking without effort – and for reducing the risk of pulmonary aspiration.

Getting to and from the table, or helping to set it, is often overlooked. But for people with poor balance or reduced leg strength, being able to move around while seated is a great advantage. Even small contributions – like helping set the table – can promote self-reliance, dignity, and inclusion at mealtimes.



Example:

# Setting the table

## A VELA CHAIR ENABLES:

- :: Reaching food or tableware stored high or low in cabinets while seated, thanks to the chair's electric height adjustment
- :: Moving independently to or from the dining area while carrying food or dishes, using your feet to walk the chair forward on its smooth-running wheels
- :: Setting the table while seated securely, with both hands free, thanks to the stable braking function

Example:

# Eating

## A VELA CHAIR ENABLES:

- :: Moving into position at the dining table while seated – and then activating the brake to ensure safety and stability during meals
- :: Sitting comfortably for extended periods in an adjustable, ergonomic chair – making it easier to eat and enjoy time with others



Watch a video by scanning the QR code or visit: [VL1935.dk/eat](https://VL1935.dk/eat)



# Cleaning and laundry!

Cleaning tasks often require good balance, mobility, and leg strength, as well as the ability to use both hands freely. For many, it is more energy-efficient to clean while seated. It reduces the strain of standing and balancing, and allows for short rest breaks when needed.

Everyday cleaning can be physically demanding – and for some people with disabilities, even feel out of reach.

A VELA Chair supports cleaning activities by combining mobility, stability, and comfort. While seated, you can move around the home using your legs to push the chair, keeping both hands free for vacuuming, dusting, or wiping surfaces. The electric height adjustment makes it easier to load and unload laundry from a low washing machine or a high-placed dryer. And with the central brake activated, the chair becomes a safe and stable workstation for tasks like hanging clothes, folding laundry, or ironing.





Example:

# Cleaning

## A VELA CHAIR ENABLES:

- :: Reaching both high and low areas while seated, thanks to the electric height adjustment – for example, when dusting shelves or baseboards (skirting boards)
- :: Vacuuming while seated without losing balance, as the chair provides a stable and secure base
- :: Moving around while cleaning, using your legs to push the chair and keeping both hands free to vacuum or wipe surfaces
- :: Maintaining an active, ergonomic posture with a forward-tilted seat and supportive backrest that aids cleaning tasks
- :: Saving energy by performing cleaning activities while seated – ideal for users with limited strength or balance, and with the option to rest when needed



Watch a video by scanning the QR code or visit: [VL1935.dk/clean](https://VL1935.dk/clean)

Example:

# Laundry

## A VELA CHAIR ENABLES:

- :: Adjusting the seat height to reach both low and high appliances – for example, lowering the chair to load a washing machine or raising it to use a clothes dryer
- :: Moving around with a laundry basket on your lap, using the smooth-running wheels and your legs to guide the chair
- :: Hanging up clothes or folding laundry with both hands free, while seated safely with the brake engaged
- :: Sitting comfortably in an ergonomic chair with forward tilt and back support that helps during laundry tasks
- :: Reducing strain on your back and shoulders by adjusting the seat height to the specific task – no more bending or twisting unnecessarily
- :: Conserving energy by carrying out laundry activities while seated, with the ability to take short rests when needed



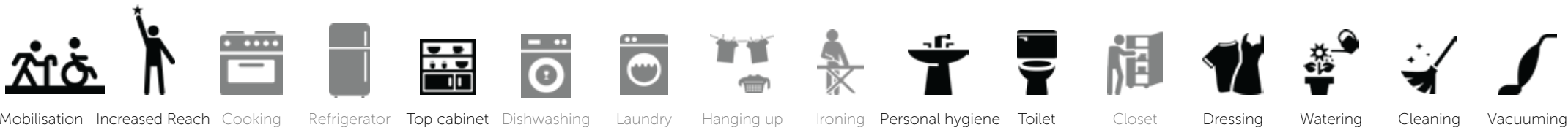
Watch a video by scanning the QR code or visit: [VL1935.dk/laundry](https://VL1935.dk/laundry)



# Personal care!

Personal care and using the toilet can be a daily challenge for people with disabilities. Tasks like brushing teeth, shaving, or using the toilet are deeply tied to one's sense of dignity and identity – and losing the ability to manage these independently can be difficult to accept.

A VELA Chair helps users regain control in the bathroom. It allows for independent movement to and from the bathroom while seated, and the chair's adjustability makes transferring to the toilet safer and easier. The electric height adjustment also supports everyday routines at the sink and mirror by allowing you to adjust the chair to a comfortable and functional working height – for greater confidence and independence in personal care.



Example:

# Using the toilet

## A VELA CHAIR ENABLES:

- :: Independent transfer to and from the bathroom, using your legs to walk the chair on smooth-running wheels – suitable for hard surfaces like tiles
- :: Safer and easier transfer to the toilet, supported by the chair's brake, forward-tilted seat, and stable armrests
- :: Greater self-determination, as you can decide when to use the toilet without relying on assistance – promoting autonomy and daily quality of life

Example:

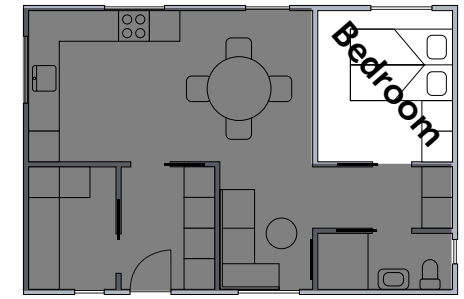
# Personal hygiene

## A VELA CHAIR ENABLES:

- :: Safe and stable seating during personal care tasks, with both hands free for hand washing, shaving, brushing teeth or applying makeup
- :: Easy height adjustment while seated, making it more comfortable to perform different activities at the sink and mirror
- :: Independent movement around the bathroom while seated, using your legs to walk the chair – ideal for accessing items like towels or toothbrushes from shelves or cabinets



Watch a video by scanning the QR code or visit: [VL1935.dk/care](https://VL1935.dk/care)



# Bedtime!

As the day winds down, fatigue sets in and concentration fades. For many people with disabilities, low energy is a daily challenge that affects mobility and independence – especially when getting ready for bed.

A VELA Chair helps conserve energy and supports people with poor balance or limited leg strength during transfers and dressing. It provides stability and comfort, allowing the user to move from the chair to the bed while seated – reducing the risk of falls. The electric height adjustment can assist with standing up safely, even when energy is low. And by adjusting the seat height and tilt to suit specific tasks, the chair helps minimise awkward bending and twisting – making dressing and undressing easier, safer, and more comfortable.





Example:

## To and from bed

### A VELA CHAIR ENABLES:

- :: Safe and independent transfer from bed to chair, with the brake providing stability and reducing the risk of falling
- :: Support when rising to a standing position, using the electric height adjustment for smooth and gentle assistance
- :: Freedom to decide when to get up or go to bed, without relying on help – promoting autonomy and self-determination



Watch a video by scanning the QR code or visit: [VL1935.dk/bed](https://VL1935.dk/bed)

Example:

## Dressing

### A VELA CHAIR ENABLES:

- :: Independent movement around the bedroom while seated, using smooth-running wheels to access clothes in drawers and cabinets
- :: Reaching both high and low storage spaces while seated, thanks to the electric height adjustment
- :: Stable and safe seating during dressing, with both hands free to handle clothes when the brake is engaged
- :: Improved self-sufficiency when dressing, as the chair can be lowered to reduce bending and twisting in the back and shoulders



Watch a video by scanning the QR code or visit: [VL1935.dk/clothes](https://VL1935.dk/clothes)

# Benefits for users and care providers when using the VELA Chair

The VELA Chair adds value to both users and care providers in everyday activities across the kitchen, bathroom, bedroom, utility room, and living room.

## **BENEFITS FOR THE USER:**

- :: Greater comfort and peace of mind – fewer transfers and improved ergonomics reduce strain and discomfort
- :: More involvement, independence, and dignity in personal care – boosting self-esteem
- :: Increased self-reliance in daily tasks, which also eases the burden on spouses and relatives
- :: Enhanced quality of life – with greater dignity, well-being, and comfort
- :: Better access to hygiene, leading to improved health – such as independently reaching the sink or toilet
- :: More independence and flexibility – with greater control over daily routines and increased mastery of activities

## **BENEFITS FOR THE CARE PROVIDER:**

- :: Improved working conditions – fewer transfers and better working posture reduce physical strain
- :: More efficient use of time – enabling flexible planning and allowing staff to focus more on users with greater needs
- :: Less stress and more structure – when users manage basic tasks like toileting and bed transfers independently
- :: Greater user autonomy can reduce resistance or conflict, especially among individuals with dementia or cognitive impairments – improving well-being for both users and relatives

# Electric height adjustment – everyday support where it matters



Chairs with electric height adjustment offer significant support in daily life – especially when it comes to mobility, balance, and independence.

This feature is ideal for people who experience pain in the hands, difficulty twisting, dizziness, or who need the chair to raise and lower smoothly – for instance due to back problems or joint pain.



## **SAVE ENERGY FOR WHAT MATTERS**

Avoid unnecessary strain when doing everyday tasks like brushing your teeth, putting dishes in the dishwasher, or reaching for a sweater in the top cabinet. With electric height adjustment, the chair does the work – so you can save your energy.



## **STAND UP WITH EASE**

With a gentle press of a button, the chair's lift helps you stand up safely and with less effort. It also provides support while you regain your balance – making transfers more secure and comfortable.



## **DO MORE – WITH LESS HELP**

Electric height adjustment makes it easier to cook, manage personal care, and handle other everyday tasks. This increases independence and reduces the need for assistance – supporting both dignity and quality of life.



Watch a video by scanning the QR code or visit: [vl1935.dk/standup](https://vl1935.dk/standup)



## Danish quality – built to last

VELA is a Danish family-owned company founded in 1935 by Vermund Larsen. Today, VELA is still based in Denmark, where we have our own development department, production facilities, and upholstery workshop.

### CHAIRS MADE WITH CARE AND PRECISION

At VELA, we continuously focus on optimising safety, functionality, and design – in close collaboration with occupational therapists. This ensures that every chair is developed with a strong focus on ergonomics and user comfort.

Our chairs are designed to withstand intensive daily use. That's why we use robust mechanical components and extra durable upholstery materials – to keep the chairs clean, functional, and reliable for years to come.

All VELA chairs are made to order in Denmark. This allows us to offer customised solutions that meet the individual needs of each user.